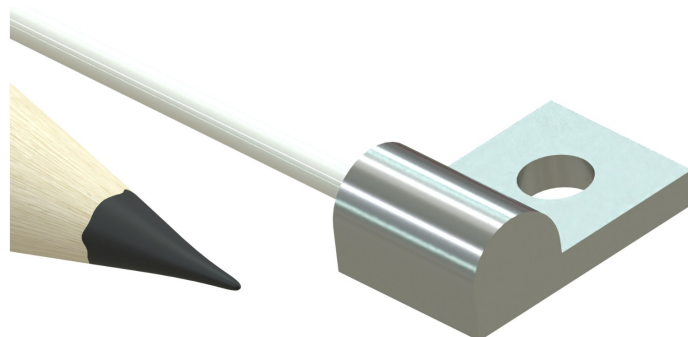


## MINIATURE SURFACE MOUNT BOLT DOWN OR CEMENT ON RTD

Bolt Down or Cement On Surface RTD

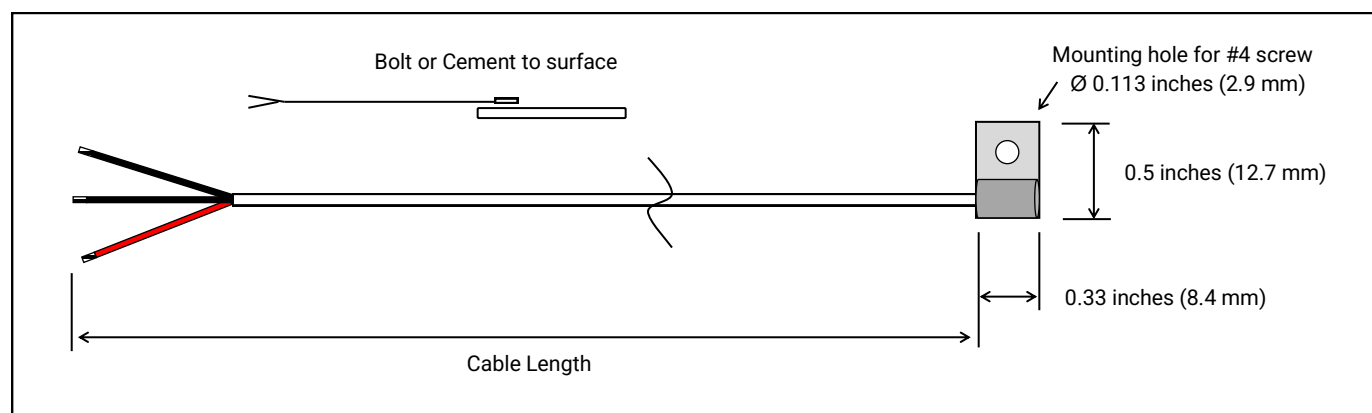
### FEATURES

- Thin Film PT100 or PT1000 RTD Element
- Fitting housing is aluminum for fast thermal response
- Made in the USA
- Teflon™ insulated wires
- Designed for research & development applications



### SPECIFICATIONS

<b>RTD element type:</b>	Thin film platinum, 100Ω at 0°C, $\alpha = 0.00385$ or Thin film platinum, 1000Ω at 0°C, $\alpha = 0.00385$
<b>Range:</b>	-58 to 400°F (-50 to 204°C)
<b>Accuracy:</b>	Class A, +/- 0.15°C
<b>Fitting Housing Material:</b>	Aluminum
<b>IP Rating:</b>	IEC IP64
<b>Response Time*:</b>	6 Seconds
<b>*Time Constant:</b>	Defined as the time required to reach 63.2% of an instantaneous temperature change Five time constants are required to approach 100% of the step change value
<b>Lead Wire:</b>	PFA Teflon™ insulated, 26 AWG, stranded conductors
<b>Wiring:</b>	2 or 3-wire



### ORDERING INFORMATION

Model	RTD Element Type	Cable Length	Number of Wires	Connector
<b>SMBD-RTD</b>	□□□□□	-□□□	-□	-□□
	<b>PT100</b> Platinum 100Ω	<b>036</b> 36 inches	<b>2</b> 2-wire	<b>N</b> No connector
	<b>PT1000</b> Platinum 1000Ω	<b>072</b> 72 inches	<b>3</b> 3-wire	<b>FJ</b> Female mini-jack
		<b>180</b> 180 inches		<b>MP</b> Male mini-plug

### ORDERING EXAMPLE

**SMBD-RTD-PT100-036-3-N:** Bolt Down RTD, PT100 Element, 36 inch long cable, 3-wire, no connector

