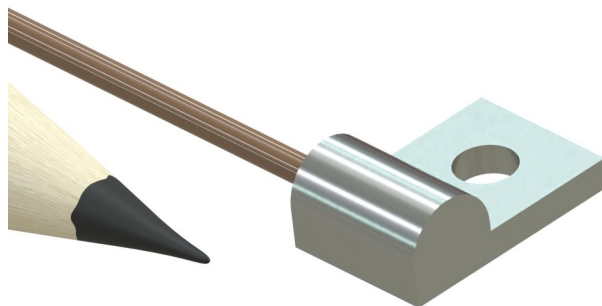


## MINIATURE SURFACE MOUNT BOLT DOWN OR CEMENT ON THERMOCOUPLE

Bolt Down or Cement On Surface Thermocouple

### FEATURES

- Type E, J, K, or T thermocouple
- Fitting housing is aluminum for fast thermal response
- Made in the USA
- Teflon™ insulated wires
- Designed for research & development applications



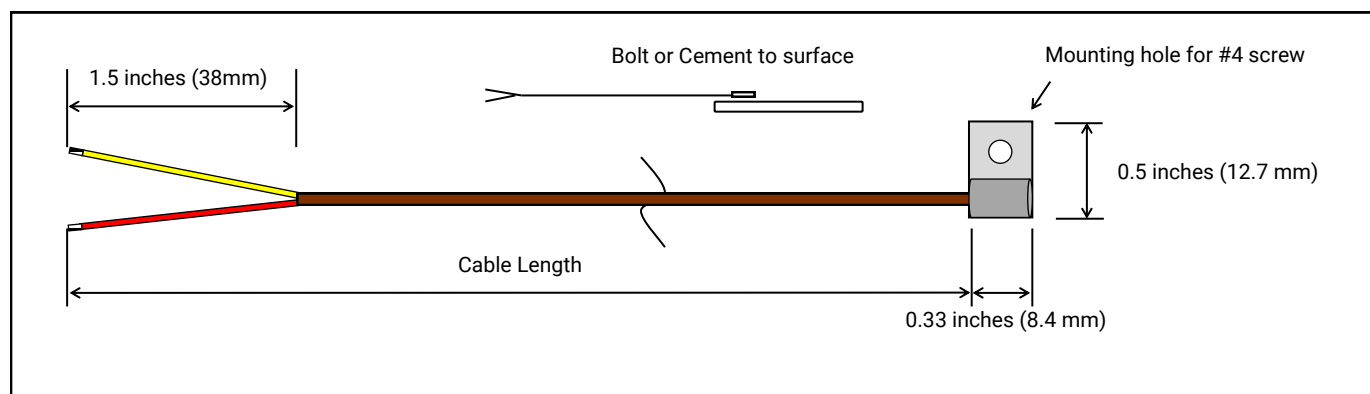
### SPECIFICATIONS

**Thermocouple type:** E, J, K or T  
**Range:** -50 to 500°F (-45 to 260°C)  
**Accuracy:** Greater of +/-0.4% of reading or +/- 1.1°C (Special Limits of Error)

**Fitting Housing Material:** Aluminum  
**IP Rating:** IEC IP64

**Response Time\*:** 6 Seconds  
**\*Time Constant:** Defined as the time required to reach 63.2% of an instantaneous temperature change  
Five time constants are required to approach 100% of the step change value

**Lead Wire:** Teflon™ insulated, 30 AWG, solid conductors



### ORDERING INFORMATION

Model	Cable Length	Junction	Calibration	Connector
<b>SMBD-TC</b>	-□□□	-□	-□	-□□
	<b>036</b> 36 inches <b>072</b> 72 inches <b>180</b> 180 inches	<b>G</b> Grounded <b>U</b> Ungrounded	<b>E</b> Type E <b>J</b> Type J <b>K</b> Type K <b>T</b> Type T	<b>N</b> No connector <b>MP</b> Male mini-plug <b>SP</b> Male standard plug

### ORDERING EXAMPLE

**SMBD-TC-036-U-K-N:** Bolt Down Thermocouple, 36 inch long cable, Ungrounded, Type K, no connector

CUSTOM CONFIGURATIONS AVAILABLE

