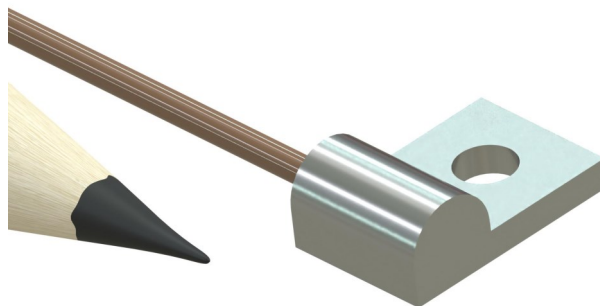


MINIATURE SURFACE MOUNT BOLT DOWN OR CEMENT ON RTD

Bolt Down or Cement On Surface RTD

FEATURES

- Thin Film PT100 RTD Element
- Fitting housing is aluminum for fast thermal response
- Made in the USA
- Teflon™ insulated wires
- Designed for research & development applications



SPECIFICATIONS

RTD element type: Thin film platinum, 100Ω at 0°C, $\alpha = 0.00385$

Range: -90 to 500°F (-70 to 260°C)

Accuracy: Class A, $\pm 0.15^\circ\text{C}$

Fitting Housing Material: Aluminum

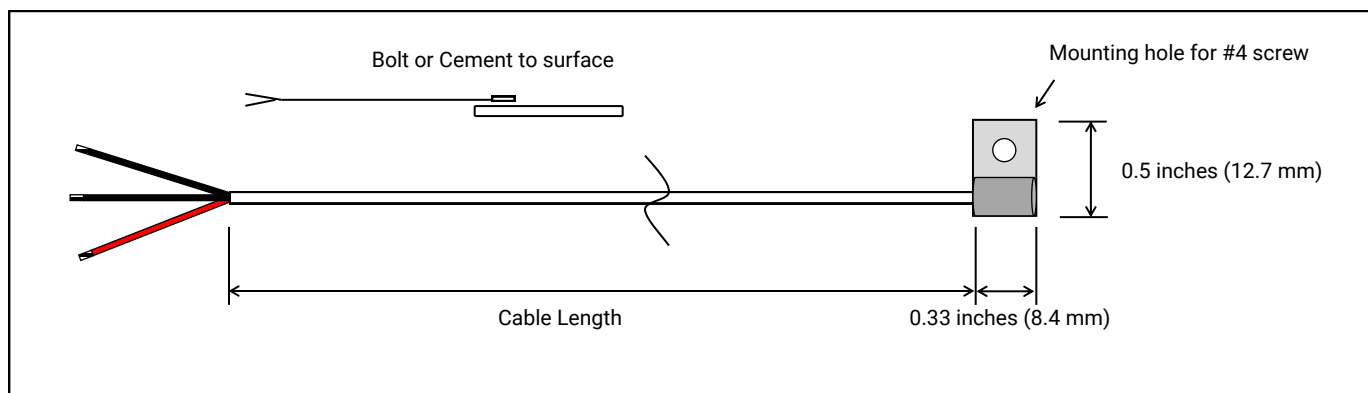
IP Rating: IEC IP64

Response Time*: 6 Seconds

***Time Constant:** Defined as the time required to reach 63.2% of an instantaneous temperature change
Five time constants are required to approach 100% of the step change value

Lead Wire: Teflon™ insulated, 26 AWG, stranded conductors

Wiring: 3-wire



ORDERING INFORMATION

Model	RTD Element Type	Cable Length	Number of Wires	Connector
SMBD-RTD	□□□□□	-□□□	-□	-□□
	PT100 Platinum 100Ω	036 36 inches 072 72 inches 180 180 inches	3 3-wire	N No connector MP Male mini-plug

ORDERING EXAMPLE

SMBD-RTD-PT100-036-3-N: Bolt Down RTD, PT100 Element, 36 inch long cable, 3-wire, no connector

CUSTOM CONFIGURATIONS AVAILABLE

