

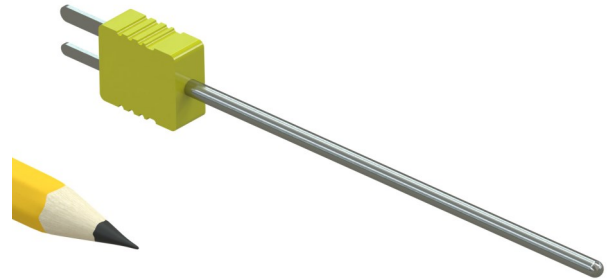
TEMPERATURE SENSOR

QUICK DISCONNECT THERMOCOUPLE STINGER PROBE

Thermocouple Probe with Attached Connector

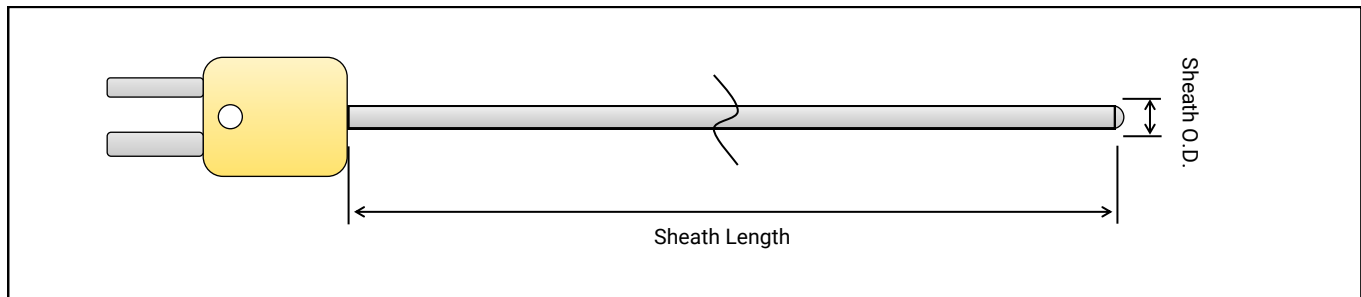
FEATURES

- Type E, J, K, or T thermocouple
- Miniature or Standard size quick disconnect connector
- Made in the USA
- Mineral insulated sheath for high strength, bendable
- Designed for research & development applications



SPECIFICATIONS

Thermocouple type: E, J, K, or T
Accuracy: Greater of +/-0.4% of reading or +/- 1.1°C (Special Limits of Error)
Operating Range: (E = -328 to 1600°F) (J = 32 to 1400°F) (K = -328 to 2300°F) (T = -328 to 700°F)
Sheath Material: 304 Stainless Steel, 316 Stainless Steel, or Inconel 600
Sheath Insulation: Magnesium Oxide (MgO)
Sensing Junction: Exposed, Grounded, or Ungrounded
Connector: Mini or Standard 2-pin Quick Disconnect ; Male Plug or Female Jack



ORDERING INFORMATION

Model	Sheath O.D.	Sheath Length	Junction	Sheath Material	Calibration	Connector
QDC	- □□□	- □. □	- □	- □□	- □	- □□
	062 0.062 inches 125 0.125 inches 187 0.187 inches 250 0.250 inches	2.0 2 inches 4.0 4 inches 6.0 6 inches 8.0 8 inches 10.0 10 inches 12.0 12 inches	E Exposed G Grounded U Ungrounded	IN Inconel 600 S4 304 Stainless S6 316 Stainless	E Type E J Type J K Type K T Type T	MJ Female Mini-Jack MP Male Mini-Plug SJ Female Standard Jack SP Male Standard Plug

EXAMPLE

QDC-125-4.0-U-S4-K-MP: 0.125" Sheath O.D., 4 inch long, Ungrounded, 304 SS sheath, Type K, Male mini-plug connector

CUSTOM CONFIGURATIONS AVAILABLE

