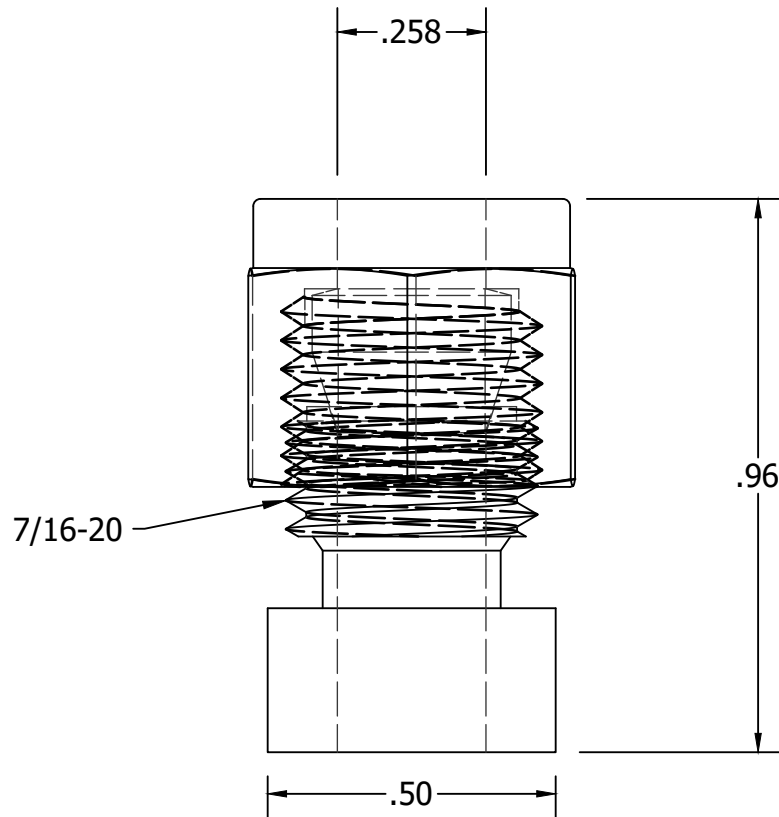
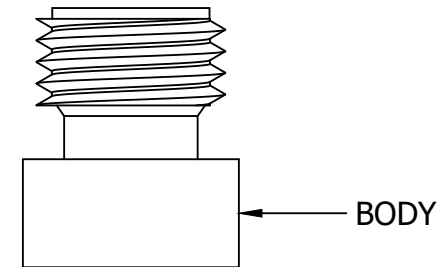
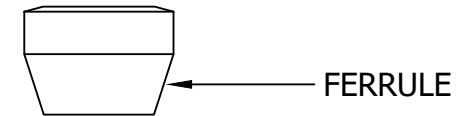
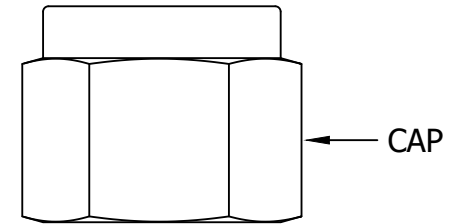




Order of Assembly



NOTES

- 1.) MATERIAL: 316 STAINLESS STEEL
- 2.) NUMBER OF FERRULES: 1 (SINGLE TYPE)

<p align="center"><u>GENERAL TOLERANCES</u> <u>DIMENSIONS ARE IN INCHES</u></p> <p align="center">X.XX ±0.01 X.XXX ±0.005</p> <p align="center">ANGULAR ±0.5°</p> <p align="center">BREAK SHARP EDGES & CORNERS 0.010 CHAMFER FIRST THREAD 0.010 X 45°</p> <p align="center">[] DIMENSIONS ARE IN MILLIMETERS</p>		 <p align="center">3rd ANGLE PROJECTION</p>		 <p>HAROLD G. SCHAEVITZ INDUSTRIES</p>	
<p>THIS DOCUMENT CONTAINS PROPRIETARY INFORMATION AND IS SOLELY FOR THE EXCLUSIVE USE OF THE ORIGINAL ADDRESSEE. IT IS NOT TO BE REPRODUCED, DISTRIBUTED OR DIVULGED IN WHOLE OR IN PART TO ANY OTHER FIRM OR INDIVIDUAL BY ANY MANNER WITHOUT PRIOR WRITTEN PERMISSION FROM: "THE SENSOR CONNECTION LLC."</p>		<p align="center">The Sensor Connection</p> <p align="center">Bloomfield Hills, Michigan www.HGSIND.com</p>			
<p>DRAWN: J. Nielson</p>		<p>4/5/2018</p>		<p>TITLE: CF-0250-DW-SS</p>	
<p>CHECKED: N. Murphy</p>		<p>4/5/2018</p>		<p>SIZE A</p>	<p>DWG. Number 2018-004</p>
		<p>SCALE: 3:1</p>	<p>APPROVED: N. Murphy</p>	<p>DATE: 4/6/2018</p>	<p>Sheet: 1 of 1</p>